

Quick Reference Guide

Bacteria can be difficult to differentiate from cellular or crystalline debris. The proprietary reagents in the SediVue* Bacteria Confirmation Kit are designed to chemically dissolve blood cells and crystals that interfere with bacteria identification so that you can more confidently confirm the absence or presence of bacteria in a patient's sample.

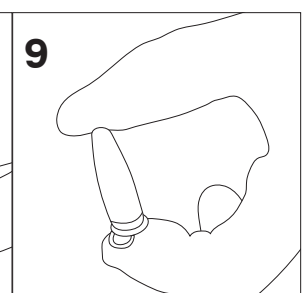
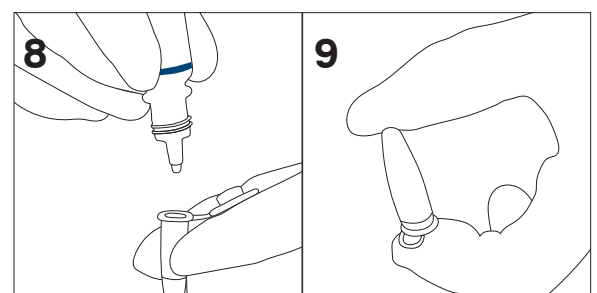
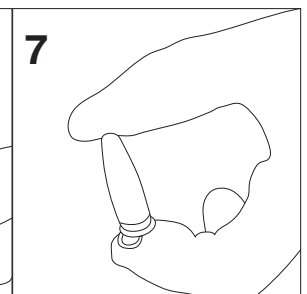
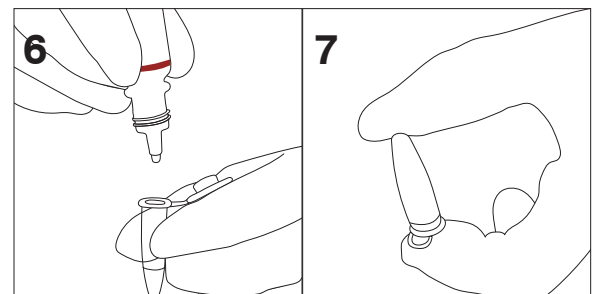
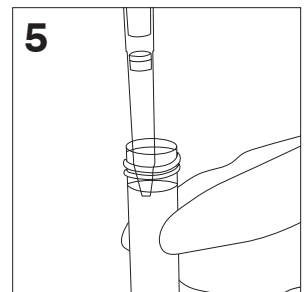
Storage and handling requirements

- Store unopened kits in the refrigerator to maximize their efficacy.
- Store opened kits at room temperature.
- Always wear general laboratory personal protective equipment (PPE) such as gloves, eye wear, etc., when using the kit to prevent eye and skin irritation.

How to confirm your bacteria result with the kit

IMPORTANT: When handling the reagents, always wear general laboratory PPE (such as gloves, eyewear, etc.) to protect yourself from skin and/or eye irritation.

1. Select the patient from **Recent Test Results** on the IDEXX VetLab* Station Home screen and then tap **Add Test**.
2. Tap the **SediVue Dx** icon.
3. Tap **Confirm Bacteria**.
4. Tap **Append Results**.
5. Using the SediVue* pipette and a new pipette tip, aspirate 165 μ L of well-mixed urine and dispense it into a new sample tube (provided in the kit).
Note: For best results, use uncentrifuged urine within 2 hours of collection.
6. Add 1 drop of Reagent 1 (red) to the same tube.
7. Cap the tube and invert it 5 times to mix.
8. Add 1 drop of Reagent 2 (blue) to the same tube.
9. Cap the tube and invert it 5 times to mix.
10. Aspirate 165 μ L of the prepared sample and inject it into a cartridge in the pipetting window on the analyzer.
11. Press the **Start** button on the front of the SediVue Dx* Urine Sediment Analyzer.



Interpreting results

- Results will be reported as either “None detected” for rods or “Present” for rods and cocci.
- In rare instances, results will be suppressed and a message will appear on the report indicating that the sample is crowded and/or reagents did not dissolve enough elements in the sample. Additionally, some elements, such as sperm and epithelial cells, may not be dissolved fully by the reagents and could impact results. Review the images to determine if further action is needed. If results are inconclusive, do one of the following:
 - Rerun the bacteria confirmation kit using 2 drops of each reagent.
 - Perform an air-dried, stained cytological preparation (“dry prep”).
 - Perform a urine culture.

Frequently asked questions

Question	Answer
When should I use the SediVue Bacteria Confirmation Kit?	You should use the kit if: <ul style="list-style-type: none">• You receive a bacteria result of “Suspect presence” and the corresponding images do not provide conclusive evidence of the absence or presence of bacteria.• You receive a bacteria result that does not align with the corresponding images and/or your expectations.
How does the bacteria confirmation kit help to clarify my bacteria results?	The reagents in the kit dissolve crystalline and cellular material, allowing better visibility to the absence or presence of bacteria.
How do I interpret my results obtained after using the bacteria confirmation kit?	Your results will report rods and cocci as either “None detected” or “Present.” As always, be sure to use the corresponding images along with results to make the most informed decision.
I received a message stating the kit didn't dissolve enough nonbacterial sediment. What do I do?	This message indicates that the images are not clear enough to confidently identify the absence or presence of bacteria. To resolve, review the images to determine if further action is needed and/or do one of the following: <ul style="list-style-type: none">• Rerun the bacteria confirmation kit using 2 drops of each reagent• Perform an air-dried cytological preparation (“dry prep”)• Perform a urine culture.
Why do I need to wear PPE while using the kit?	The bacteria confirmation kit reagents could cause skin and eye irritation. We recommend wearing PPE as a precaution.
Why am I still seeing cells and/or other material in my images after running the bacteria confirmation kit?	While it is possible to see some remaining elements (such as epithelial cells which don't dissolve as well as others or crystalline, cellular, or amorphous material), results and/or images will not be impacted in most cases. If these elements are interfering with the quality of the results and/or images, do one of the following: <ul style="list-style-type: none">• Rerun the bacteria confirmation kit using 2 drops of each reagent.• Perform an air-dried cytological preparation (“dry prep”).• Perform a urine culture. If this issue persists, confirm that you're following the steps as outlined on the front of this document—adding the reagents in the improper order, or not at all, will impact results.
Can I run the bacteria confirmation kit without an initial patient run?	You can run the bacteria confirmation kit without an initial SediVue Dx patient run; however, you will be invoiced, important elements may dissolve in the sample, and only bacteria results will be reported.
Will I be charged for running the bacteria confirmation kit?	You will not be invoiced for running the bacteria confirmation kit as long as it's run as part of a complete urine sediment analysis.
Why doesn't bacteria dissolve with the bacteria confirmation kit reagents?	Bacteria have an outer layer that prevents penetration by the reagents, thereby maintaining their integrity.
How do I order another bacteria confirmation kit?	A new kit will be shipped to you, via autoreplenishment, based on your usage and the kit expiration date. Should you need to order beforehand, call your IDEXX Inside Sales Representative.
Which species are supported for use with the bacteria confirmation kit?	The bacteria confirmation kit is intended for use with canine and feline urine.